

DU PARADIS À L'ENFER

pour Flûte (ou Saxophone)
et Piano

Durée : ± 3'

Christian DEBECQ

Adagio (♩ = 76-80)

Flûte

Piano

a piacere

a piacere

Musical score system 10-12. It consists of three staves: a single treble clef staff at the top, and a grand staff (treble and bass clefs) below. The music features a melodic line in the upper treble staff and a complex accompaniment in the grand staff with many beamed notes and slurs. A large grey watermark 'D' is visible over the first two staves.

Musical score system 13-14. It consists of three staves: a single treble clef staff at the top, and a grand staff below. The music features a melodic line in the upper treble staff and a complex accompaniment in the grand staff with many beamed notes and slurs. A large grey watermark 'E' is visible over the second staff. The word "Rall..." is written above the end of the system on both the top and middle staves.

Musical score system 15-16. It consists of three staves: a single treble clef staff at the top, and a grand staff below. The music features a melodic line in the upper treble staff and a complex accompaniment in the grand staff with many beamed notes and slurs. A large grey watermark 'M' is visible over the second staff. The tempo marking "♩ Swing rapide (♩ = 184-200)" is present above the first staff of each system. The dynamic marking "f" is on the first staff of system 15, and "mf" is on the first staff of system 16.

Musical score system 17-19. It consists of three staves: a single treble clef staff at the top, and a grand staff below. The music features a melodic line in the upper treble staff and a complex accompaniment in the grand staff with many beamed notes and slurs. A large grey watermark 'O' is visible over the second staff.

DU PARADIS À L'ENFER

pour Flûte (ou Saxophone) et Piano

Flûte

Christian DEBECQ

D

E

M

O

Adagio (♩ = 76-80)
4/4
a piacere

7

13

Rall ...

Swing rapide (♩ = 184-200)
f

17

21

24

27

31

ff

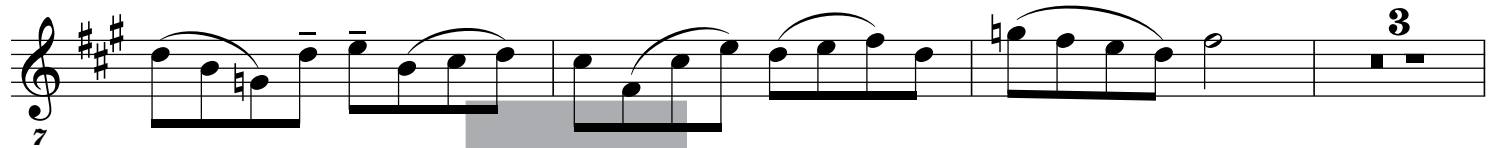
DU PARADIS À L'ENFER

pour Flûte ou Saxophone et Piano

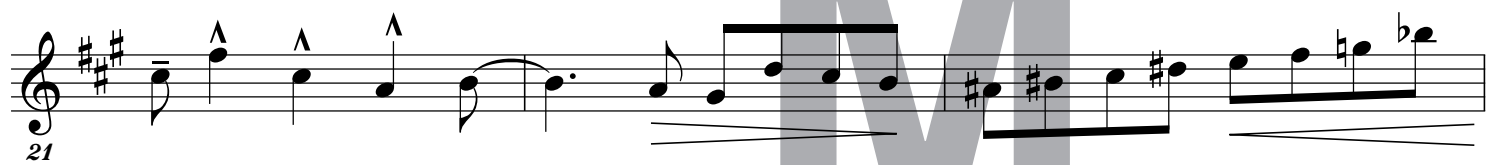
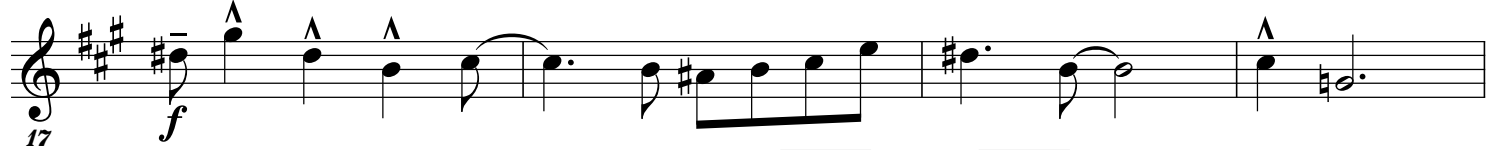
Saxophone Alto (Mi \flat)

Christian DEBECQ

Adagio (♩ = 76-80)



♩ Swing rapide (♩ = 184-200)



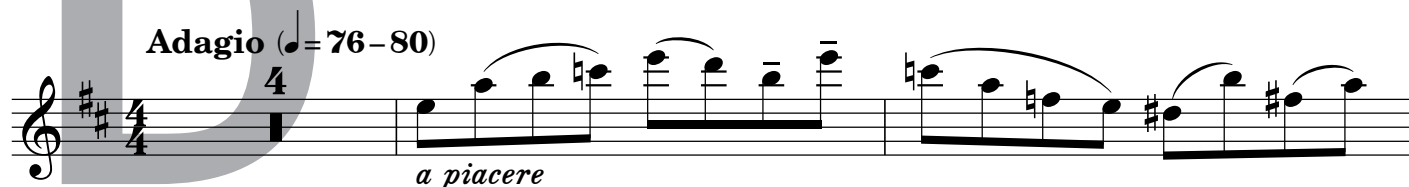
DU PARADIS À L'ENFER

pour Flûte ou Saxophone et Piano

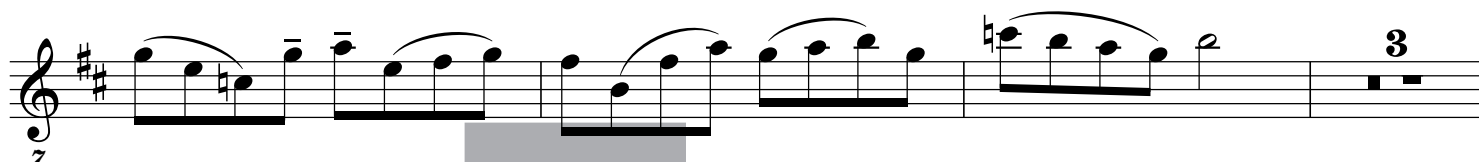
Saxophone Soprano (Si \flat)

Christian DEBECQ

Adagio (♩ = 76-80)



a piacere



Rall ...



♩ Swing rapide (♩ = 184-200)

