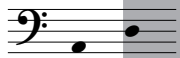


# PILOUETTE

pour Timbales et Piano

Durée : ± 2'20"

Accord :



Berthe di VITO-DELVAUX

Mathieu COURA

(opus 153/3 - 1981)

Moderato (♩ = ±100)

Timbales

Piano

5

8

Musical score system 1 (measures 12-15). The system includes a bass line and a grand staff (treble and bass clefs). Measure 12 starts with a *mf* dynamic. Measure 14 features a *f* dynamic and a *g<sup>va</sup>* marking. Measure 15 ends with a *p* dynamic. A large watermark 'D' is visible over the first two measures.

Musical score system 2 (measures 16-19). The system includes a bass line and a grand staff. Measure 16 starts with a *mf* dynamic. Measure 17 features a *p* dynamic. Measure 19 ends with a *p* dynamic. A large watermark 'E' is visible over the second measure.

Musical score system 3 (measures 20-23). The system includes a bass line and a grand staff. Measure 20 starts with a *mf* dynamic. Measure 21 features a *p* dynamic. Measure 22 features a *mf* dynamic. Measure 23 features a *mf* dynamic. Triplet markings (3) are present in measures 21 and 22. A large watermark 'M' is visible over the second measure.

Musical score system 4 (measures 24-27). The system includes a bass line and a grand staff. Measure 24 starts with a *f* dynamic. Measure 25 features a *f* dynamic. Measure 26 features a *f* dynamic. Measure 27 features a *f* dynamic. A large watermark 'O' is visible over the second measure.

# PILOUETTE

Timbales

pour Timbales et Piano

Berthe di VITO-DELVAUX

Mathieu COURA

(opus 153/3 - 1981)

Accord :



Moderato (♩ = ± 100)