

à Monsieur Edmond LELOIR
Professeur au Conservatoire de Genève

SONATE

pour Cor et Piano

Berthe di VITO-DELVAUX

(Opus 109 - 1966)

Cor en Fa

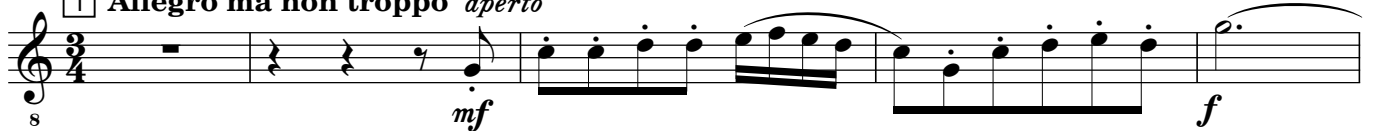
I Tema e variazioni

A piacere

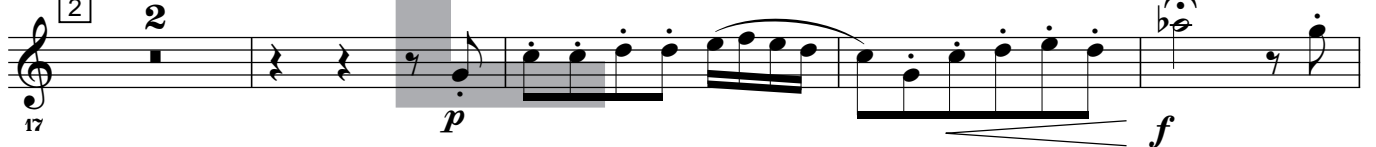
tuffato



1 Allegro ma non troppo aperto



2



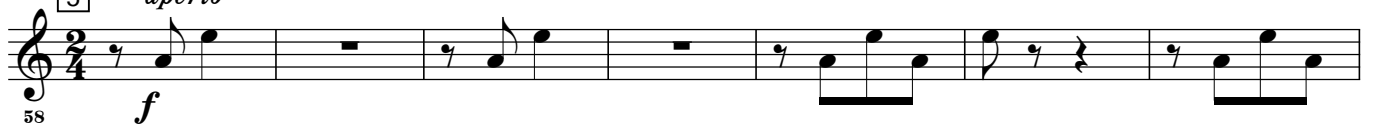
3 Meno, senza rigore di misura



4



5 Giocoso e vivo aperto



à Monsieur Edmond LELOIR
Professeur au Conservatoire de Genève

SONATE

pour Cor et Piano

I

Berthe di VITO-DELVAUX

(Opus 109 - 1966)

Tema e variazioni

Cor en Fa

A piacere

f

tuffato

p

Piano

A piacere

Allegro ma non troppo

aperto

mf

1

Allegro ma non troppo

f

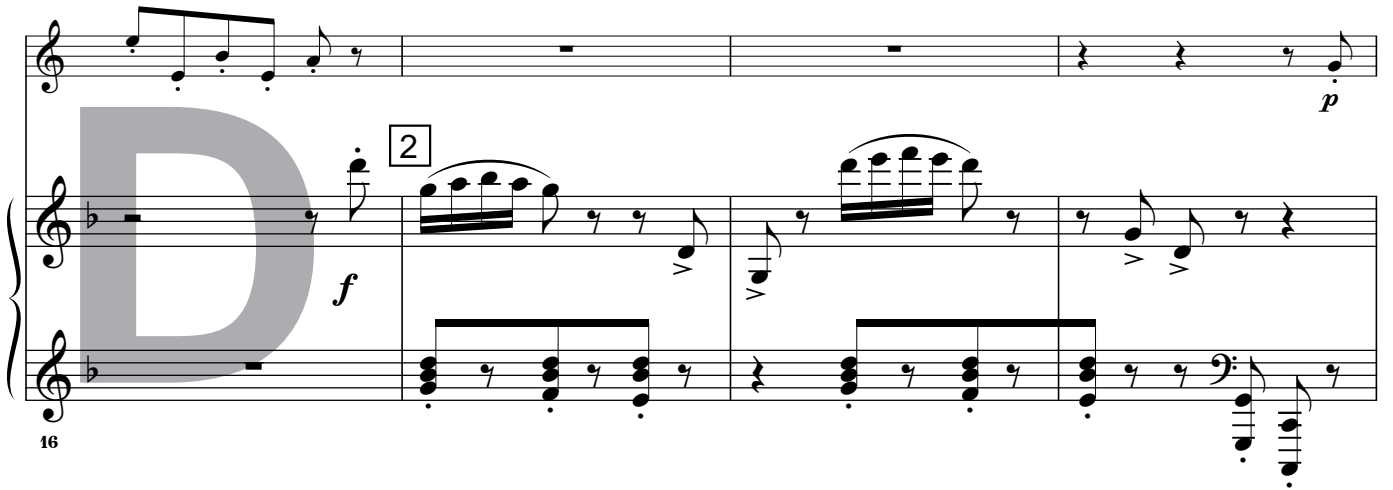
8

f

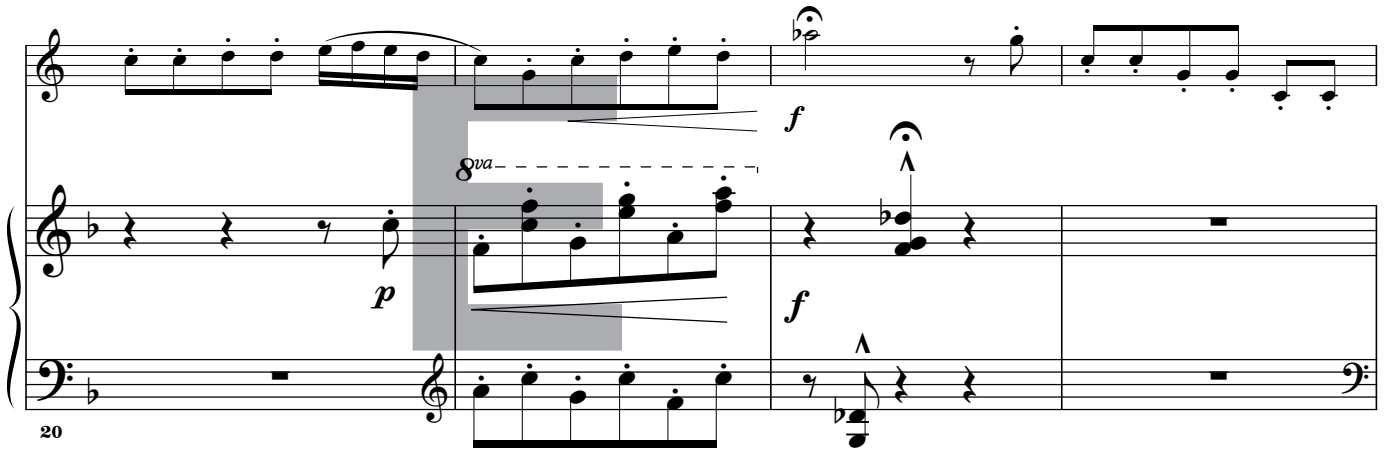
f

mf

12



Musical score system 1, measures 16-19. It features a vocal line and a piano accompaniment. A large grey letter 'D' is overlaid on the first two measures. The piano part includes a first ending bracket labeled '2' and dynamic markings *f* and *p*.

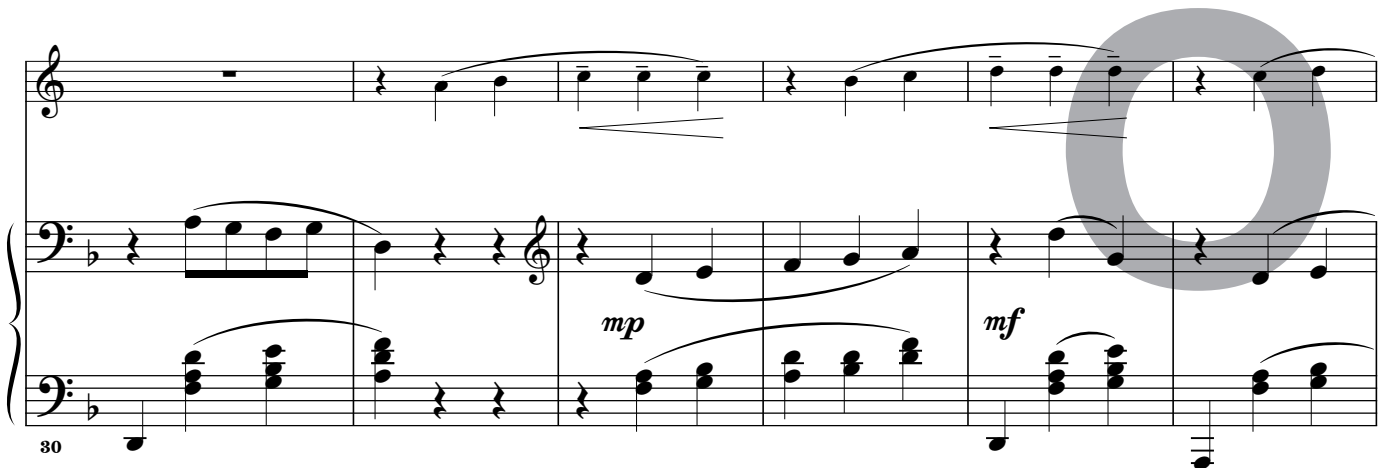


Musical score system 2, measures 20-23. It features a vocal line and a piano accompaniment. A large grey letter 'E' is overlaid on measures 21-22. The piano part includes a first ending bracket labeled '3' and dynamic markings *p* and *f*. A *8va* marking is present above the piano part in measure 21.

Meno, senza rigore di misura



Musical score system 3, measures 24-27. It features a vocal line and a piano accompaniment. A large grey letter 'M' is overlaid on measures 25-26. The piano part includes a first ending bracket labeled '3' and dynamic markings *mp*, *pp*, and *mf*. The time signature changes to 3/4.



Musical score system 4, measures 28-31. It features a vocal line and a piano accompaniment. A large grey letter 'O' is overlaid on measures 29-30. The piano part includes dynamic markings *mp* and *mf*.

II

14 **Lento non troppo (rubato)** *ten. ten. ten.* **Tempo**

f *p espressivo*

8

15 *mf*

19 *f* *p subito*

24 *mf* **Animando**

2

17 **Mosso** *pp*

36 *pp* **Rit.**

18 **Agitato** *p*

46 *mf*

II

Cor en Fa

Lento non troppo (rubato) *f* *ten.* *ten.* *ten.* Tempo *p espressivo*

Piano

14

Lento non troppo (rubato) Tempo *pp* *p*

1

6

10

mf

15

mp *p*

14

p

Musical score system 18. It consists of three staves: a single treble clef staff at the top and a grand staff (treble and bass clefs) below. The music is in a key with one flat (B-flat major or D minor). The first staff has a melodic line with a dynamic marking of *f*. The grand staff has a piano accompaniment with chords and moving lines. A large grey watermark 'D' is visible on the left side of the system.

18

Musical score system 22. It consists of three staves: a single treble clef staff at the top and a grand staff below. The music is in a key with two sharps (D major or F# minor). The first staff starts with a dynamic marking of *p subito* and ends with *mf*. The grand staff has a piano accompaniment with chords and moving lines. A box containing the number '16' is placed above the first measure of the grand staff. A large grey watermark 'E' is visible in the center of the system.

22

Musical score system 26. It consists of three staves: a single treble clef staff at the top and a grand staff below. The music is in a key with two sharps (D major or F# minor). The first staff has a melodic line with a dynamic marking of *mf*. The grand staff has a piano accompaniment with chords and moving lines. The word 'Animando' is written above the first staff and below the grand staff. A large grey watermark 'M' is visible in the center of the system.

26

Musical score system 30. It consists of three staves: a single treble clef staff at the top and a grand staff below. The music is in a key with two sharps (D major or F# minor). The first staff has a melodic line with a dynamic marking of *pp*. The grand staff has a piano accompaniment with chords and moving lines. The word 'Mosso' is written above the first staff and below the grand staff. A box containing the number '17' is placed above the first measure of the grand staff. A large grey watermark 'O' is visible on the right side of the system.

30

III

Allegro con ritmo

Musical score for 'III' in 3/4 time, marked 'Allegro con ritmo'. The score consists of ten staves of music. It begins with a treble clef and a key signature of one sharp (F#). The tempo is 'Allegro con ritmo'. The score includes various dynamics such as *f*, *mf*, *p*, and *mp*, as well as articulation marks like accents and slurs. There are also performance instructions like 'cresc.' and 'Meno'. The score is divided into measures, with measure numbers 24, 25, 26, 27, and 28 indicated in boxes. The piece concludes with a double bar line and a 'cresc.' instruction.

III

Allegro con ritmo

Cor en Fa

Musical staff for Cor en Fa, starting with a whole rest and ending with a half note G4. Dynamics include *f*.

24 Allegro con ritmo

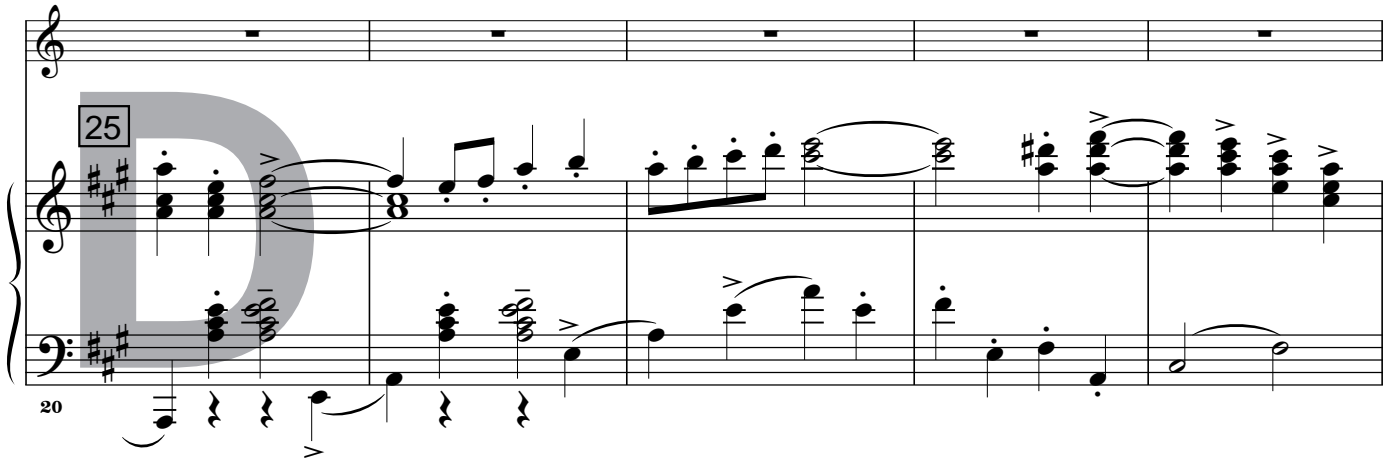
Piano

Musical staves for Piano, starting with a *f* dynamic. Includes a large grey watermark 'D'.

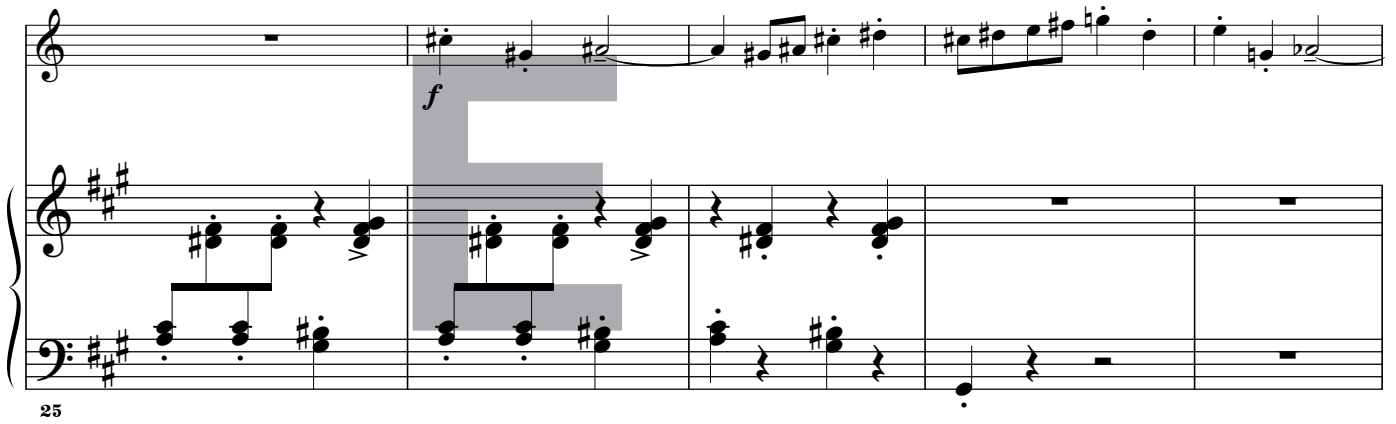
Musical staves for Piano, measures 5-9. Includes a large grey watermark 'E'.

Musical staves for Piano, measures 10-14. Includes a large grey watermark 'M'.

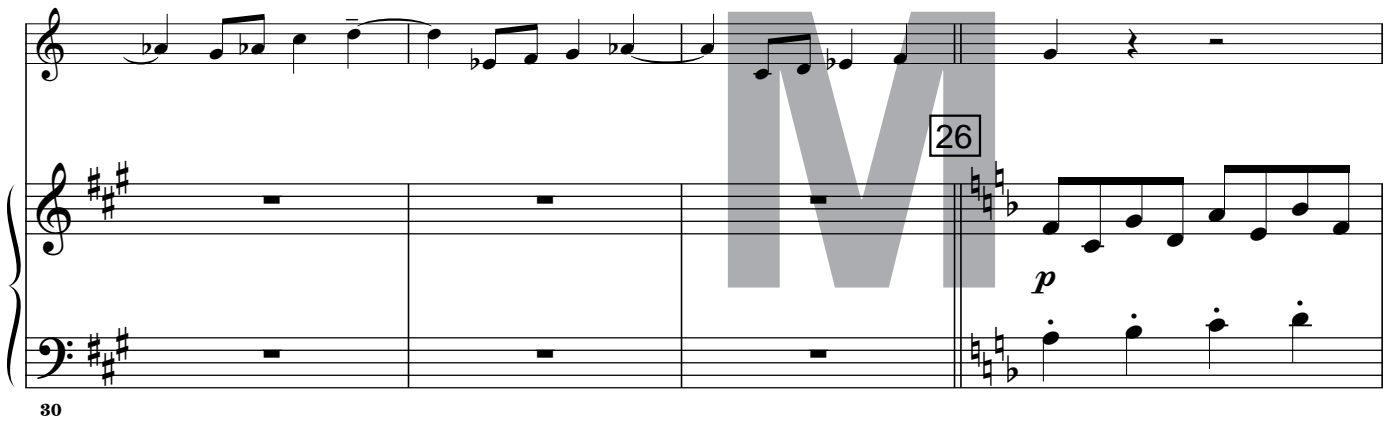
Musical staves for Piano, measures 15-19. Includes a large grey watermark 'O'. Dynamics include *mf* and *f*.



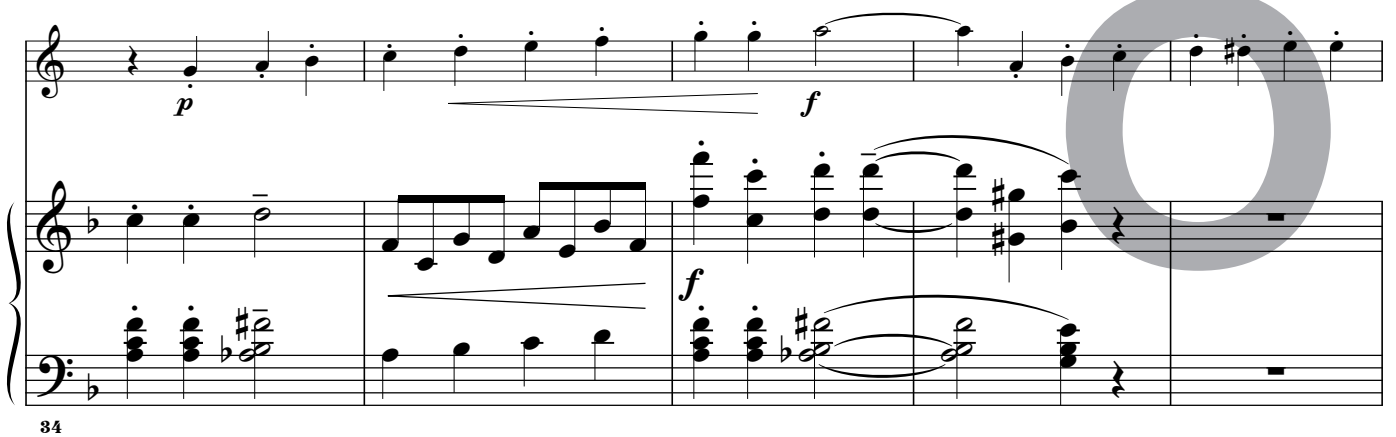
Musical score system 1, measures 20-25. The system includes a vocal line and a piano accompaniment. A large grey watermark 'D' is overlaid on the piano part. Measure 25 is marked with a box containing the number '25'. The piano part features complex chords and melodic lines with various articulations.



Musical score system 2, measures 25-30. The system includes a vocal line and a piano accompaniment. A large grey watermark 'E' is overlaid on the piano part. Measure 25 is marked with a box containing the number '25'. The piano part features complex chords and melodic lines with various articulations.



Musical score system 3, measures 30-34. The system includes a vocal line and a piano accompaniment. A large grey watermark 'M' is overlaid on the piano part. Measure 26 is marked with a box containing the number '26'. The piano part features complex chords and melodic lines with various articulations.



Musical score system 4, measures 34-39. The system includes a vocal line and a piano accompaniment. A large grey watermark 'O' is overlaid on the piano part. Measure 34 is marked with a box containing the number '34'. The piano part features complex chords and melodic lines with various articulations.